

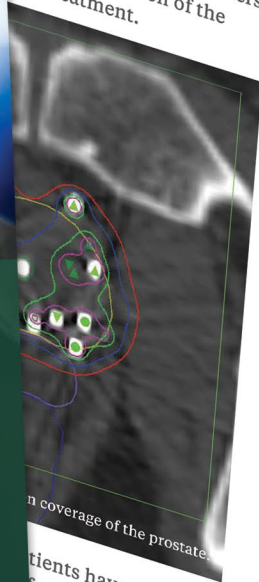


UNDERSTANDING PROSTATE CANCER OPTIONS

RADIATION ONCOLOGY



receive external radiation before or preparation, which includes IMRT (small gold markers) into flexible linear fiducial markers the exact location of the daily treatment.



coverage of the prostate

patients have for the free and all patients

ation are easily g normal activities and/or recreation). symptoms upon ms may include ng, hesitancy, . Less than 10% with a catheter te after waking

symptoms tend to peak from 2-4 weeks after the implant procedure, then resolve slowly, with most patients urinating at pretreatment levels by 6 months.

Chronic urinary irritation can occur in up to 10-15% of patients. Urinary incontinence is uncommon. Up to 5% of patients can require placement of a catheter after the initial procedure, with less than 2% requiring it for longer periods (6-12 months).

Previously, rectal damage was rare and has been further reduced using SpaceOAR® hydrogel.

Of those patients with no erectile dysfunction pretreatment, impotence will occur in approximately 30%. Typically, 75% of the effected patients respond to oral medications such as Viagra®, Levitra® or Cialis®.



IMRT

Advantages

IMRT allows higher external beam radiation doses to be delivered safely; higher than what was previously possible with daily treatment.

Randomized trials have shown that higher doses to the prostate are beneficial, demonstrating improved outcomes. Studies have also confirmed that patients treated with IMRT experience fewer side effects than with older techniques, despite the higher doses. IMRT for the prostate is always done with image guidance.

